

## ■ data delivery

- 1. WeTransfer
- 2. E-Mail: [daten@kiliandruck.de](mailto:daten@kiliandruck.de)

## ■ data request - checklist

- Please provide an unencrypted PDF according to the PDF/X-3 or PDF/X-4 standard.
- Create your final format including a bleed allowance of 3 mm.
- Text should be at least 3 mm away from the edge.

Special requirements may apply in specific cases, such as labels with pre-cut holes or multilayer labels. We will be happy to advise you.

- Do not create a frame around your file to indicate the trim size.  
If you do, create it as a special colour and name it "die-cut" or "die-cut-contour".
- If possible, please send us a colour-accurate proof or sample.

## ■ colours

- Create your artwork in the CMYK colour space. RGB data will be converted.
- If your product contains special colours, make sure they are labelled correctly.
- Text should be created in 100% black (C=0, M=0, Y=0, K=100).
- Always set black text or lines to overprint to avoid white flashes.

## ■ images and logos

- The resolution for grayscale and colour images should be at least 300 dpi.
- Logos used should ideally be vectorized.

## ■ fonts

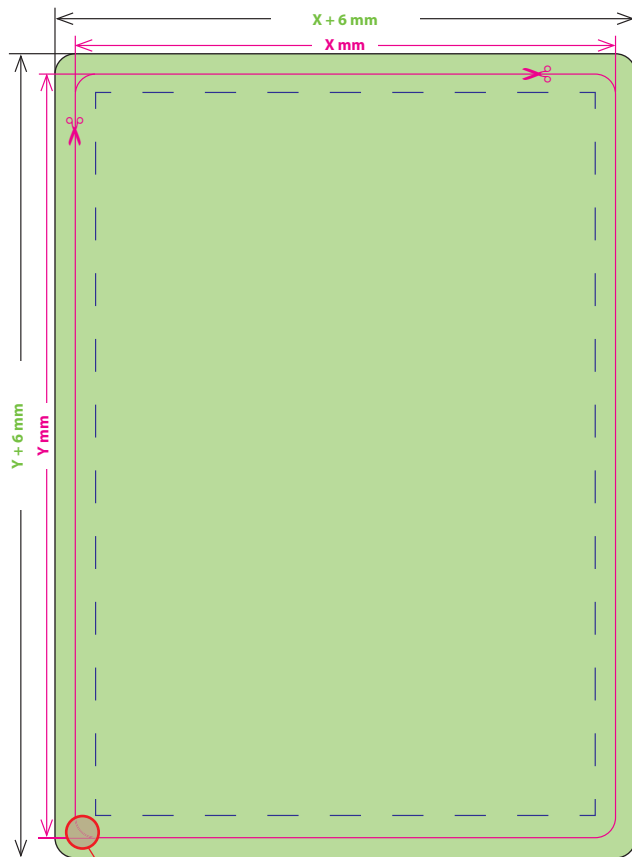
- Embed, vectorize or supply all fonts used in the document.
- Font size should not be less than 6 pt.
- If font sizes of 6 pt or smaller are used, they must not be created in colour.
- For reversed text of 6 pt or smaller, the background must be a solid colour.

**If you have any questions, requests or suggestions,  
we are happy to assist you as your expert partner!**

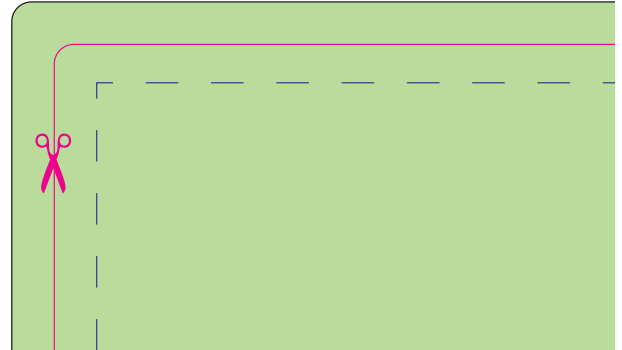
### KILIANDRUCK GRÜNSTADT DINGES GMBH

Benzstr. 3  
67269 Grünstadt  
Tel.: +49 63 59 93 27 - 0  
Fax: +49 63 59 93 27 - 50  
[info@kiliandruck.de](mailto:info@kiliandruck.de)  
[www.kd-labels.de](http://www.kd-labels.de)





**Note:**  
For production reasons, all corners are rounded with a radius of 3 mm as standard.



#### Data format with bleed

$(X + 6 \text{ mm}) \times (Y + 6 \text{ mm})$

You should always create your data with bleed. 3 mm on the left and right as well as the top and bottom.

Please extend images and background colours to the trim edge to avoid white edges after cutting.

#### Final format $X \times Y \text{ mm}$ (die-cut contour)

Your product will be cut to this format.

#### Type area / safety margin

Please always create text with a safety margin of at least 3 mm from the final format and do not allow it to extend beyond the type area in order to avoid unwanted cropping of the text or important information.

If you have any questions, requests or suggestions,  
we are happy to assist you as your expert partner!

KILIANDRUCK GRÜNSTADT DINGES GMBH

Benzstr. 3  
67269 Grünstadt  
Tel.: +49 63 59 93 27-0  
Fax: +49 63 59 93 27-50  
info@kiliandruck.de  
www.kd-labels.de

